



PRESS RELEASE

FOR IMMEDIATE RELEASE

December 13, 2024

MEDIA CONTACT: Deb Leonard at (513) 316-7510 (mobile), or Deb.Leonard@cincinnati-oh.gov

Notice of Construction and Traffic Alert for Springfield Township

Closure of Mill Road from ~December 16 through early January

CINCINNATI – Traffic impacts will occur along Mill Road in Springfield Township starting the week of December 16 through early January 2025 as the Metropolitan Sewer District of Greater Cincinnati (MSD) constructs new lateral sewers for four residences. The project is expected to be completed (with roadway restoration) by spring 2025, pending weather and field conditions.

Mill Road will be closed to thru traffic between Aspenhill Drive and Springdale Road from 8:00 a.m. – 5:00 p.m. Monday through Thursday/Friday (except for the Christmas and New Years holiday weeks). The roadway will re-open to thru traffic each evening. Local access to homes along Mill Road will be maintained at all times.

MSD is installing four new sanitary sewer laterals across Mill Road to bring public sewer service to four homes.

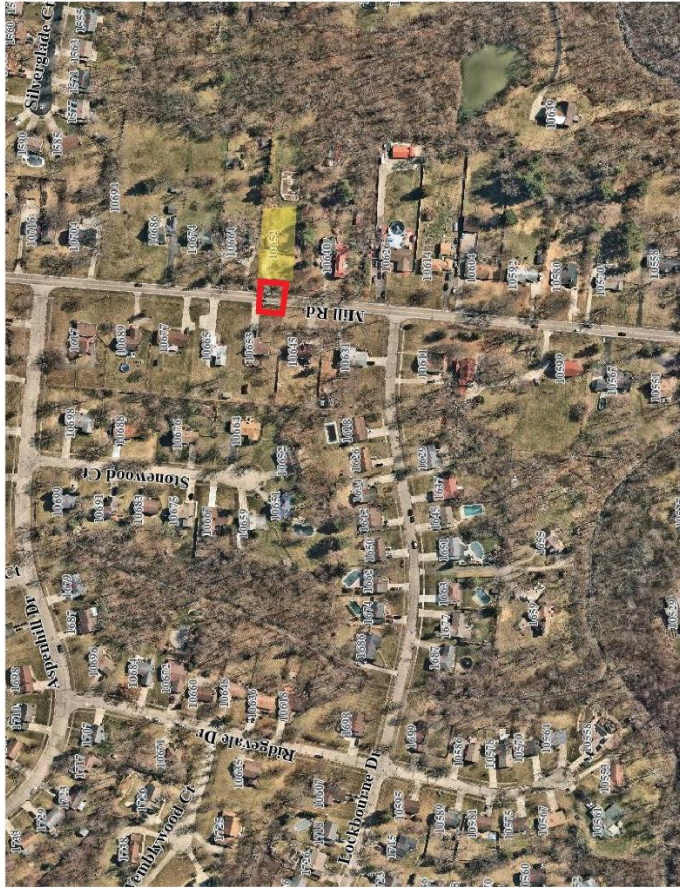
Please see the attached project map.

MSD's contractor, Smithcorp, Inc., is typically working 7:00 a.m. – 7:00 p.m. Monday through Thursday, with work on Fridays as needed.

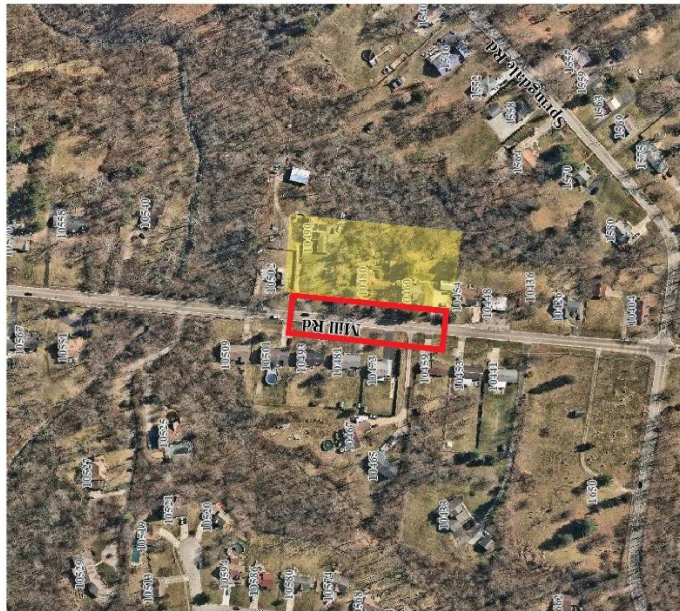
For additional information about the MSD project, please contact MSD Customer Service at (513) 244-1300 (option 5) or MSD.Communications@cincinnati-oh.gov and reference Project ID# 10440130.

###

PROJECT AREA MAP



Properties



Construction Zone

